

PRYME® RADIO PRODUCTS

PRYMEBLU® MOBILE ADAPTER GUIDE For Compatible Wireless Audio Accessories

The PRYMEBLU Mobile Adapter allows you to use a compatible wireless headset or other audio accessory with your mobile or base station two-way radio.



**Bluetooth Adapter
Model No.: BT-5M Series
Made in Taiwan**

This manual applies to all PRYMEBLU BT-5M series adapters, including the BT-5M00J, BT-5M01J, BT-5M21J, BT-5M03J, and BT-5M02J.

PRYME® and PRYMEBLU® are trademarks owned by PRYME Radio Products, Brea CA. All other product or service marks are the property of their respective owners.
© 2011 PRYME Radio Products, Brea CA. All Rights Reserved

Federal Communication Commission Interference Statement

This equipment has been tested and found to comply with the limits for a Class B digital device, pursuant to Part 15 of the FCC Rules. These limits are designed to provide reasonable protection against harmful interference in a residential installation. This equipment generates uses and can radiate radio frequency energy and, if not installed and used in accordance with the instructions, may cause harmful interference to radio communications. However, there is no guarantee that interference will not occur in a particular installation. If this equipment does cause harmful interference to radio or television reception, which can be determined by turning the equipment off and on, the user is encouraged to try to correct the interference by one of the following measures:

- Reorient or relocate the receiving antenna.
- Increase the separation between the equipment and receiver.
- Connect the equipment into an outlet on a circuit different from that to which the receiver is connected.
- Consult the dealer or an experienced radio/TV technician for help.

FCC Caution: Any changes or modifications not expressly approved by the party responsible for compliance could void the user's authority to operate this equipment.

This device complies with Part 15 of the FCC Rules. Operation is subject to the following two conditions: (1) This device may not cause harmful interference, and (2) this device must accept any interference received, including interference that may cause undesired operation.

This equipment complies with FCC RF radiation exposure limits set forth for an uncontrolled environment. To maintain compliance with FCC RF exposure compliance requirements, please avoid direct contact to the transmitting antenna during transmitting.

RF Exposure Warning!

Please keep product 20cm away from your body or bystander during the radio operation. The typical handheld two-way radios were certified under mobile usage condition (i.e. keep 20cm away from the user body) and use of such radio closer than 20cm may exceed the US RF exposure limit and shall be avoided.

PRYME® RADIO PRODUCTS

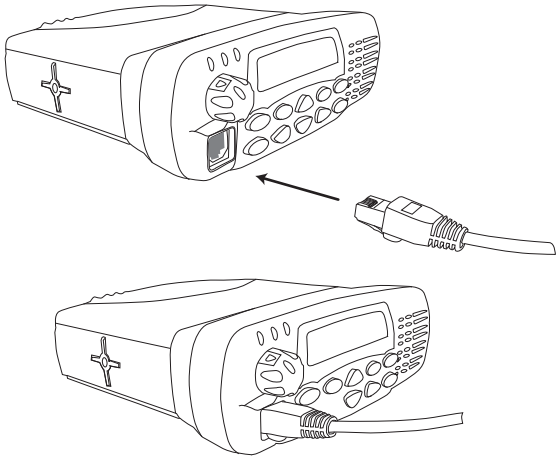
911 Mariner St., Brea, CA 92821
PH: 714.257.0300 FAX: 714.257.0600
TOLL FREE: 800.666.2654
WWW.PRYME.COM

version 1.00.00 July 2011

Pryme Wireless PTT Transmitter

QUICK START

1. Connect the PRYMEBLU adapter to a compatible two-way mobile radio.
2. Pair the PRYMEBLU Adapter with a compatible wireless audio accessory.
3. Pair with the PRYMEBLU BT-PTT wireless Bluetooth Push-to-Talk.
4. Test and use.

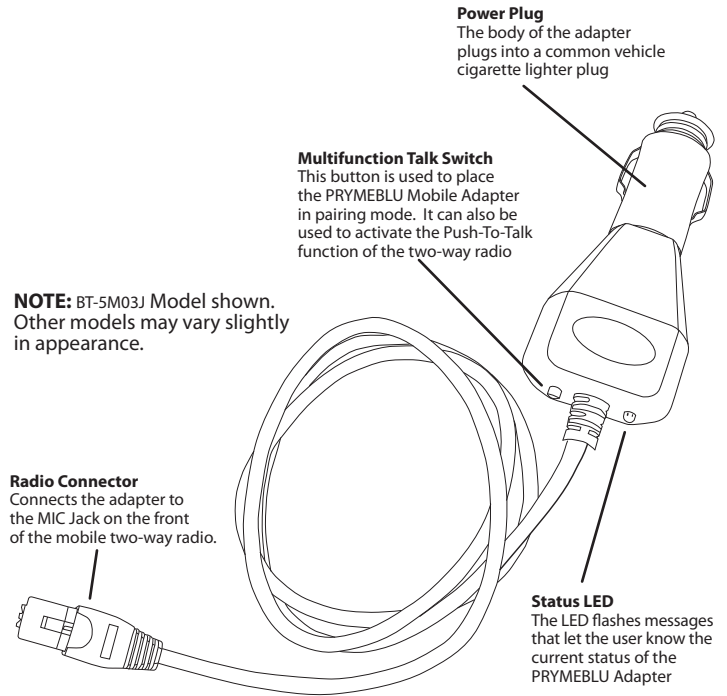


STEP ONE: Attaching the Adapter to a Radio

To connect your PRYMEBLU Mobile Adapter to a two-way radio, follow these steps:

- * Always turn off your mobile two-way radio before connecting the PRYMEBLU Adapter.
- * Always make sure that your PRYMEBLU Mobile Adapter is powered off by unplugging it from the vehicle power socket before connecting it a mobile two-way radio.
- * Unplug the hand microphone from the mobile two-way radio MIC Jack.
- * Plug the radio connector of the PRYMEBLU Mobile Adapter into the MIC Jack of the mobile two-way radio. On most models the connector will simply snap into place.

Controls and Connection



Power Plug
The body of the adapter plugs into a common vehicle cigarette lighter plug

Multifunction Talk Switch
This button is used to place the PRYMEBLU Mobile Adapter in pairing mode. It can also be used to activate the Push-To-Talk function of the two-way radio

NOTE: BT-5M03J Model shown. Other models may vary slightly in appearance.

Radio Connector
Connects the adapter to the MIC Jack on the front of the mobile two-way radio.

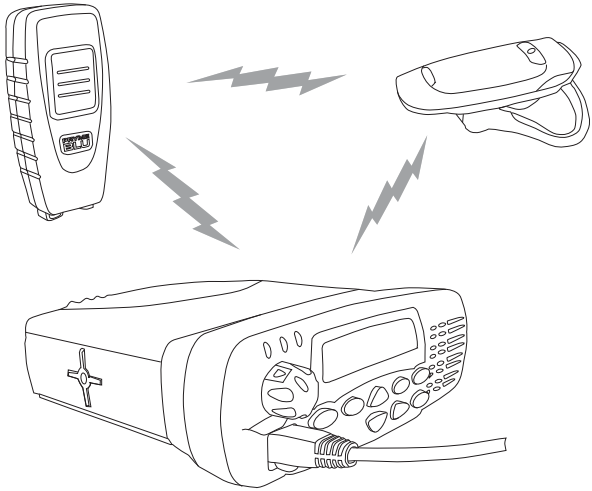
Status LED
The LED flashes messages that let the user know the current status of the PRYMEBLU Adapter

STEP TWO: Pairing the PRYMEBLU Mobile Adapter with a Bluetooth Headset

- * Turn off the two-way radio that the PRYMEBLU Mobile Adapter is connected to.
- * Insert the power plug of the PRYMEBLU Mobile Adapter into a cigarette lighter style vehicle power port while holding down the Talk button on the PRYMEBLU Adapter. NOTE: The vehicle may need to have the engine running or the key may need to be turned to the ON position in order for the adapter to draw power from the vehicle.
- * Continue to hold the Talk button down for approximately three seconds. Release the Talk button when the status LED begins to flash two times per second.
- * The PRYMEBLU Adapter is now in audio accessory pairing mode. Activate the pairing mode on your compatible wireless audio accessory.
- * Once the wireless audio accessory and PRYMEBLU Adapter are paired with each other, the status LED on the adapter will show a constant blue light for three seconds.
- * If the PRYMEBLU Adapter does not detect a compatible wireless accessory within 60 seconds of being put into pairing mode, the adapter will exit the pairing mode and resume normal operation.

STEP THREE: Pairing the PRYMEBLU Mobile Adapter and PRYMEBLU PTT

- * Turn off the two-way radio that the PRYMEBLU Mobile Adapter is connected to.
- * Insert the power plug of the PRYMEBLU Mobile Adapter into a cigarette lighter style vehicle power port while holding down the Talk button on the PRYMEBLU Adapter. NOTE: The vehicle may need to have the engine running or the key may need to be turned to the ON position in order for the adapter to draw power from the vehicle.
- * Continue to hold the Talk button down for approximately three seconds. Release the Talk button when the status LED begins to flash two times per second. Then, press the Talk button again. The LED should now flash three times per second, indicating that the PRYMEBLU Adapter is now in PTT Pairing mode.
- * Place the PRYMEBLU PTT in pairing mode by holding down the Push-To-Talk button while moving the power switch to the On position. Continue to hold down the Push-To-Talk button until the LED indicator on the PRYMEBLU PTT flashes blue continuously. You can then release the Push-to-Talk button. The PRYMEBLU PTT is now in pairing mode.
- * Once the PRYMEBLU Adapter and PRYMEBLU PTT are paired with each other, the status LED on the PRYMEBLU Adapter will show a constant blue light for three seconds and the LED on the PTT will show one blue flash every second.
- * If the PRYMEBLU Adapter or PRYMEBLU PTT does not detect a compatible wireless accessory within 60 seconds of being put into pairing mode, the devices will exit the pairing mode and resume normal operation.

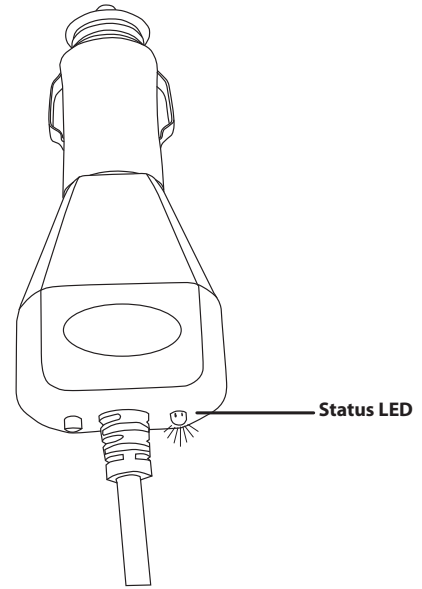


5

STATUS LED MESSAGES

The meanings of the various status LED messages shown by the PRYMEBLU Mobile Adapter are shown on the following table:

LED INDICATION	MEANING
One flash per second	Normal operation
Two flashes per second	Audio accessory pairing mode active
Three flashes per second	PTT pairing mode is active
One long flash for three seconds	Successfully paired or re-paired
No indication	No power is being supplied to the adapter



6

STEP FOUR: Transmit and Receive Operation

Once the PRYMEBLU Mobile Adapter, Bluetooth Headset and PRYMEBLU PTT have all been paired together, they should automatically reconnect whenever the devices are turned on and within range of each other.

Push-to-Talk can be activated by any of the following methods:

- * Pressing and holding the Talk button of the PRYMEBLU Mobile Adapter
- * Pressing and holding the PTT button on the PRYMEBLU PTT.

When transmitting, the operator’s voice is picked-up by:

- * The microphone in the Bluetooth headset.

When receiving, receive audio will be heard over:

- * The speaker in the mobile two-way radio.
- * On some model radios, receive audio will also be heard through the earphone in the Bluetooth headset.

TROUBLESHOOTING

My wireless audio accessory or Bluetooth PTT will not pair with the PRYME BLU Adapter.

Follow the instructions to place the PRYMEBLU Mobile Adapter into the correct pairing mode and then activate the pairing mode on the accessory. Make sure that the PRYMEBLU Adapter and accessory being paired are within one meter of each other.

My wireless audio accessory or worked before, but is not working now.

Make sure that the PRYMEBLU adapter is properly connected to the two-way radio and that the adapter has power supplied to it. Ensure that your wireless audio accessory has a fully charged battery and is turned on. If the devices will still not work, re-pair the PRYMEBLU adapter to the wireless accessories.

I can transmit using the Talk button on the adapter or the PRYMEBLU PTT but no microphone audio is being heard. - Your Bluetooth headset is not properly paired with the PRYMEBLU Adapter or has come un-paired. Try pairing the adapter and headset again.

7

SUPPORT AND WARRANTY

PRYME Radio Products warrants this product against defects in materials or workmanship for a period of one year from the date of retail purchase. PRYME will repair or replace a defective unit, at our option, without charge for parts or labor. The limited warranty is extended only to the original purchaser and is valid only to consumers in the United States and Canada. It does not cover damage or failure caused by or attributable to Acts of God, abuse, misuse, improper or abnormal usage, faulty installation, improper maintenance, lightning, or other incidences of excessive voltage, or any tampering or repairs by other than a PRYME authorized repair facility. It does not cover replacement of consumable parts, transportation costs, or damage in transit.

Repair or replacement under the terms of this warranty does not extend the terms of this warranty. This warranty can only be modified by an officer of PRYME Radio Products, and then only in writing. Should this product prove defective in workmanship or material, the consumer’s sole remedies shall be such repair or replacement as provided by the terms of this warranty. Under no circumstances shall PRYME Radio Products be liable for any loss or damage, direct, consequential, or incidental, arising out of the use of or inability to use this product. Some states do not allow limitations on how long an implied warranty lasts or the exclusions or limitations of incidental or consequential damages, so the above limitations or exclusions may not apply to you. This warranty gives you specific legal rights. You may also have other rights, which may vary, from state to state.

For support or warranty service on your PRYME product, contact us at 1-800-666-2654 or visit us on the web at www.PRYME.com.

COPYRIGHT AND TRADEMARK INFO

© 2011 PRYME Radio Products, Brea CA. All rights reserved. PRYME® and PRYMEBLU™ are trademarks owned by PRYME Radio Products. All other product or service names are the property of their respective owners.