

Federal Communication Commission Interference Statement

This equipment has been tested and found to comply with the limits for a Class B digital device, pursuant to Part 15 of the FCC Rules. These limits are designed to provide reasonable protection against harmful interference in a residential installation. This equipment generates uses and can radiate radio frequency energy and, if not installed and used in accordance with the instructions, may cause harmful interference to radio communications. However, there is no guarantee that interference will not occur in a particular installation. If this equipment does cause harmful interference to radio or television reception, which can be determined by turning the equipment off and on, the user is encouraged to try to correct the interference by one of the following measures:

- Reorient or relocate the receiving antenna.
- Increase the separation between the equipment and receiver.
- Connect the equipment into an outlet on a circuit different from that to which the receiver is connected.
- Consult the dealer or an experienced radio/TV technician for help.

FCC Caution: Any changes or modifications not expressly approved by the party responsible for compliance could void the user's authority to operate this equipment.

This device complies with Part 15 of the FCC Rules. Operation is subject to the following two conditions: (1) This device may not cause harmful interference, and (2) this device must accept any interference received, including interference that may cause undesired operation.

This equipment complies with FCC RF radiation exposure limits set forth for an uncontrolled environment. To maintain compliance with FCC RF exposure compliance requirements, please avoid direct contact to the transmitting antenna during transmitting.

RF Exposure Warning!

This device contains transmitters and receivers which emit Radio Frequency (RF) energy. The device is designed to comply with the limits for exposure to RF energy set by the Federal Communications Commission (FCC) of the United States, Industry Canada (IC) of Canada, and the regulating entities of other countries.

If you are still concerned about exposure to RF energy, you can further limit your exposure by limiting the amount of time you use the equipment or by placing more distance between your body and the device, since exposure level drops off dramatically with distance.



911 Mariner St., Brea, CA 92821
 PH: 714.257.0300 FAX: 714.257.0600
 TOLL FREE: 800.666.2654
 WWW.PRYME.COM

1.00.ZU DECEMBER 2016

PRYME[®]

RADIO PRODUCTS

PRYMEBLU BTH-400-ZU Wireless Bluetooth Speaker Microphone

For use with Zello and Wave Communicator push-to-talk apps on both Apple iOS and Android smartphones.



PRYME[®] and PRYMEBLU[®] are trademarks owned by PRYME Radio Products, Brea CA. All other product or service names are the property of their respective owners.
 © 2016 PRYME Radio Products, Brea CA. All Rights Reserved

Model No. BTH-400-ZU
Made in Taiwan

Controls and Connection

Power/Volume Knob
 The knob is used to turn the BTH-400-ZU microphone on and off and can also be used to adjust the volume of received calls.

Antenna
 The 2.4 GHz antenna is removable/replaceable and uses a standard SMA type connector.

Front-Firing Speaker
 Received calls are heard over this speaker. The volume level can be controlled using either the Power/Volume Knob on the speaker microphone, or by using the volume controls on the handset.

Microphone
 This microphone picks up the user's voice audio when making a phone or PTT Over Cellular (POC) call.

Status LEDs
 The red and blue status indicator flashes messages that lets the user know the current status of the speaker microphone.

Flashlight
 This super bright white LED provides illumination when the microphone's flashlight mode is turned on.

Lanyard Eyelet
 You can use this eyelet to attach a lanyard or wrist strap to the BTH-400-ZU microphone (not included).

Charge Jack
 This micro-USB jack is used to recharge the battery of the speaker microphone by connecting the BTH-400-ZU to a USB charger or any powered USB source.

Earphone Jack
 This standard 3.5 mm jack is used to connect an (optional) wired listen-only earphone to the speaker microphone for enhanced privacy.

Multifunction PTT Button
 This button is used to activate the push-to-talk feature of the PTT Over Cellular (POC) app. Holding this button down while turning the microphone on will also put the BTH-400-ZU into pairing mode so it can be connected to another Bluetooth device.

Phone Button
 This button can be used to answer or hang up phone calls.

Flashlight Button
 Pressing this button toggles the BTH-400-ZU flashlight LED on and off.

Belt Clip
 The slide-on clip is used to secure the BTH-400-ZU microphone to the user's belt, pocket, or other clothing when in use.

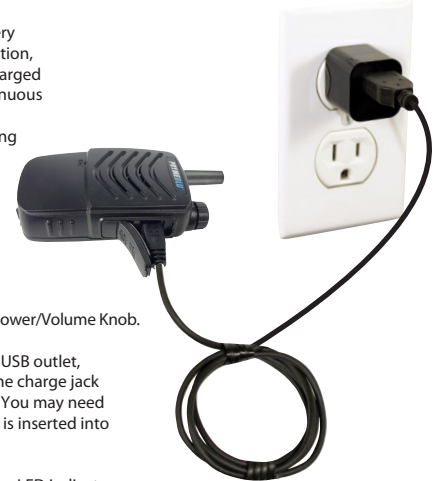
Battery Cover
 This door covers the rear of the unit, protecting the rechargeable battery. It can be removed by unfastening the latch on the bottom of the microphone.

Battery Latch
 The rear cover of the speaker microphone can be removed by unfastening the latch on the bottom of the microphone. This allows the user to gain access to the removable battery pack.

Removable Battery
 The speaker microphone is powered by a removable Lithium battery pack.

Charging the Speaker Microphone

The BTH-400-ZU speaker microphone has a replaceable Lithium Ion rechargeable battery pack which must be charged prior to operation, and must be recharged regularly. A fully charged battery will provide up to 40 hours of continuous operation before needing to be recharged. However, operating time can vary depending on usage and the condition of the battery pack. Recharge the battery regularly.



To charge the speaker microphone

1. Ensure the device is turned off using the Power/Volume Knob.
2. Plug the charge cable into any powered USB outlet, such as an AC wall charger, and then into the charge jack on the bottom of the speaker microphone. You may need to remove the protective rubber cover that is inserted into the charge jack, if one is present.
3. Once the charging process has begun, the LED indicator on the top of the speaker microphone will show a constant red light.
4. Typical charge time is approximately five hours. Actual charge time will vary depending on several factors including the battery's charge state, condition, and age.
5. When the battery is fully charged the LED indicator on the speaker microphone will turn off.
6. Disconnect the charger from the adapter when charging is completed.

Charging Cautions:

- Do not use a wall charger or charge cable that appears to be damaged. (Example: frayed wires, melted plastic, etc.) Contact PRYME to get a new manufacturer-approved replacement charger.
- Do not tamper with or modify the speaker microphone or charger.
- Always turn the speaker microphone off when charging.

Installing or Replacing the Battery Pack

The BTH-400-ZU Bluetooth speaker microphone gets its power from a rechargeable Lithium-Ion type battery pack. The battery pack must be installed inside the microphone prior to operation. Under normal usage, this battery should have a lifespan of over 1,500 charge/discharge cycles before needing to be replaced.



To access the battery compartment:

1. Rotate the belt clip on the back of the speaker microphone 90° or completely remove the clip using a Phillips head screwdriver. This will allow you to access the rear battery cover. Unfasten the battery latch on the bottom of the microphone and remove the battery cover.
2. Insert the rechargeable battery pack into the battery compartment. Ensure that the battery terminals are properly lined up with the contacts inside of the battery compartment.
3. Reinstall the battery compartment cover, refasten the battery latch, and reinstall or rotate the belt clip back into place.

Pairing with a Smartphone

The BTH-400-ZU speaker microphone is designed to work with smartphones running either the Android or Apple iOS operating systems. Prior to normal operation, the phone and speaker microphone must be paired together using the following process:



1. Activate the pairing mode on the speaker microphone by holding down the Multifunction PTT button while turning the microphone on. Continue to hold the PTT button down until the status LED flashes BLUE-RED-BLUE-RED continuously in sequence.
2. On your phone, go to Settings > Bluetooth. Move the Bluetooth slider to turn the phone's Bluetooth radio on.
3. Select "Search for Devices" from the phone's Bluetooth menu. The phone will scan for nearby Bluetooth devices and a list showing the names of nearby Bluetooth devices will be shown on the screen.
4. Choose "BTH-400-PTT" from the list.
5. Keep the phone and speaker mic near each other and wait a few seconds. The devices will pair to each other.

Reconnecting a Previously Paired Speaker Microphone and Phone

Once the speaker microphone and phone have been successfully paired together, both devices will remember that connection. They will reestablish their link whenever the speaker microphone and phone are both powered on and within range of each other, as long as the Bluetooth radio is enabled in the phone. Re-establishing this connection can take 10-60 seconds.

5

Using the Speaker Microphone with your PTT App

Once setup, you will be able to use the speaker microphone with the push-to-talk app, even if the app is running the background.

Please see insert for instructions on how to set up in Zello or WAVE.

-To activate the app's push-to-talk feature, press and hold the PTT button on the speaker microphone.

-When the app is transmitting a call, audio will be picked up by the BTH-400-ZU's built-in microphone.

-Incoming calls received by Zello will be heard over the BTH-400-ZU's built-in speaker or through the optional earphone if you are using one.

Making and Receiving Phone Calls

You can also use the speaker microphone to make and receive phone calls.

-You can initiate a phone call by using the Phone Dialer app in the phone.

-Phone audio will be routed to the BTH-400-ZU's built-in microphone and speaker (or earphone, if you are using one).

-To answer an incoming call, press the Phone button on the speaker microphone.

-While on a call, you can press the Phone button on the speaker microphone to hang up the phone and end the call.

NOTE: Because of the proximity between the speaker and microphone on the BTH-400, when on a phone call the other party may hear themselves when they speak. This can be mitigated by using an optional earphone with the BTH-400-ZU when making or receiving phone calls.

SPECIFICATIONS

| | |
|----------------------------------|---------------------------|
| Bluetooth Version: | v3.0+EDR, BTLE |
| Speaker Output: | 1 watt |
| Receiver Sensitivity: | -82 dBm (typ.) |
| Power Class: | Bluetooth class 2 |
| Range: | 10 meters |
| Display: | Blue and Red |
| Bluetooth Profile: | HFP,HSP,SPP Profile |
| Operating Voltage: | 5 VDC |
| Battery Capacity: | 1,020 mAh |
| Operating Time (Standby) | > 30 days |
| Operating Time (Typical) | > 80 hours |
| Operating Time (Continuous Talk) | > 40 hours |
| Push-to-Talk Function: | Built-in |
| Operating Temperature: | -70°F to +120°F (approx.) |

7

STATUS LED MESSAGES

The meanings of the various status LED messages shown by the speaker microphone are shown on the following table:

| LED INDICATION | MEANING |
|--|---|
| Constant Red (while plugged into charger) | Charge mode |
| No indication (while plugged into charger) | Charging is finished |
| Flashes red-blue-red-blue repeatedly | Pairing mode |
| Two blue flashes every two seconds | Speaker microphone is powered on but not paired |
| Three blue flashes every two seconds | Speaker Microphone is powered and paired |
| Constant red with one blue flash every two seconds | PTT is pressed |
| No indication | Speaker microphone is powered off |

OPTIONAL EARRHONES

Although the BTH-400-ZU has a built-in speaker for listening to received calls, some users may prefer to use a listen only earphone for enhanced privacy.

The accessory jack on the speaker microphone will accept any mono earphone with a 3.5 mm audio plug. When an earphone is used, the front-firing speaker is disabled.



PRYME EH-13895C model shown. Earphone sold separately.

PRYME makes a variety of listen-only earphones in different styles that will work with the BTH-400.

| Model | Model | Cable Length/Type | Connector |
|------------|-----------------|-------------------|----------------------|
| EH-3895C | Rubber Ear Hook | 15" Coiled | 3.5mm right angle |
| EH-389XC | Rubber Ear Hook | 25" Coiled | 3.5mm right angle |
| EH-12895C | Plastic D-Ring | 15" Coiled | 3.5mm right angle |
| EH-1289XC | Plastic D-Ring | 25" Coiled | 3.5mm right angle |
| EH-13895C | Acoustic Tube | 15" Coiled | 3.5mm right angle |
| EH-1389XC | Acoustic Tube | 30" Straight | 3.5mm right angle |
| EH-1399X | Acoustic Tube | 30" Straight | 3.5mm right straight |
| EH-GH89-SC | G-Hook (swivel) | 10" Coiled | 3.5mm right angle |

6

SUPPORT AND WARRANTY

PRYME Radio Products warrants this product against defects in materials or workmanship for a period of one year from the date of retail purchase. PRYME will repair or replace a defective unit, at our option, without charge for parts or labor. The limited warranty is extended only to the original purchaser and is valid only to consumers in the United States and Canada. It does not cover damage or failure caused by or attributable to Acts of God, abuse, misuse, improper or abnormal usage, faulty installation, improper maintenance, lightning, or other incidences of excessive voltage, or any tampering or repairs by other than a PRYME authorized repair facility. It does not cover replacement of consumable parts, transportation costs, or damage in transit.

Repair or replacement under the terms of this warranty does not extend the terms of this warranty. This warranty can only be modified by an officer of PRYME Radio Products, and then only in writing. Should this product prove defective in workmanship or material, the consumer's sole remedies shall be such repair or replacement as provided by the terms of this warranty. Under no circumstances shall PRYME Radio Products be liable for any loss or damage, direct, consequential, or incidental, arising out of the use of or inability to use this product. Some states do not allow limitations on how long an implied warranty lasts or the exclusions or limitations of incidental or consequential damages, so the above limitations or exclusions may not apply to you. This warranty gives you specific legal rights. You may also have other rights, which may vary, from state to state.

For support or warranty service on your PRYME product, contact us at 1-800-666-2654 or visit us on the web at www.PRYME.com.

COPYRIGHT AND TRADEMARK INFO

© 2016 PRYME Radio Products, Brea CA. All rights reserved.

PRYME® and PRYMEBLU® are trademarks owned by PRYME Radio Products, Brea CA.

Android is a trademark of Google Inc.

Apple is a trademark of Apple Inc.

iOS is a trademark of Cisco Systems and is used by Apple Inc. under license.

ZELLO is a trademark of Zello, Inc..

WAVE and WAVE COMMUNICATOR are trademarks of Twisted Pair Solutions, a wholly owned subsidiary of Motorola Solutions, Inc.

All other product or service names are the property of their respective owners.

DISCLAIMER: The Bluetooth wireless link used by PRYMEBLU products is an open standard, unsecured technology. As such, it is not recommended for first-responder or other mission critical users.

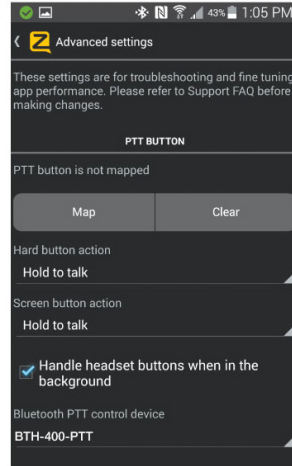
8

App Setup (ZELLO)

To get the Zello app on your phone, install Zello from your Zello@Work network, or download the app from the Google Play store or Apple App Store

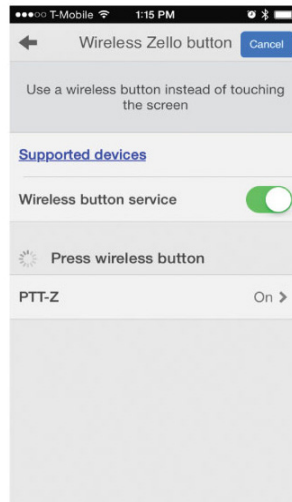
Setting up Zello (Android)

1. Make sure that your phone's Bluetooth radio is enabled, and that the speaker microphone is powered on and that the microphone and phone are connected to each other.
2. Open Zello and go to Menu > Options > Under the Hood.
3. Under "Bluetooth PTT Control," choose BTH-400-PTT. You should see a popup indicating the device control has been activated. If you don't see it, you may need to power cycle the speaker microphone and repeat this step.
4. Open the Talk screen in Zello (the screen with a big round button). In the bottom-left corner of the screen, tap-hold and slide to the Bluetooth icon to activate the speaker microphone in Zello.



Setting up Zello (iOS)

1. Make sure that your phone's Bluetooth radio is enabled, and that the speaker microphone is powered on and that the microphone and phone are connected to each other.
2. Open Zello and go to: Settings > PTT Button > Wireless Zello Button.
3. Make sure that the "Wireless Button Service" is turned on by sliding the button to the right.
4. Press and hold the PTT button on the BTH-400-PTT.
5. Select "PTT-Z" from the list of PTT devices shown on the screen.
6. Open the Talk screen in Zello (the screen with a big round button). Pressing the PTT button the Push-to-Talk device should now cause Zello to transmit.



A

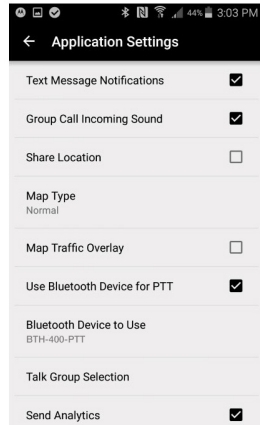
App Setup (Wave Communicator)

To get the WAVE Communicator app on your phone, download the app from the Google Play store or Apple App Store.

For Android phones the PTT function of the BTH-400-ZU can be enabled to work with the Wave Communicator app in one of two different ways, either using Serial Port Protocol (SPP) over conventional Bluetooth or using a special version of Bluetooth called Bluetooth Low Energy (BLE). The BLE option can only be used with handsets that have hardware support for BLE and are using Android version 5.0 (Lollipop) or newer. Choose the option that is right for your phone and follow the instructions below:

Setting up WAVE Communicator (Android-SPP)

1. Make sure that your phone's Bluetooth radio is enabled, and that the speaker microphone is powered on and that the microphone and phone are connected (paired) to each other.
2. Open WAVE Communicator and log in using your username and password.
3. Tap on the More Options symbol "⋮" in the top right hand corner of the app and then tap "App Settings."
4. Make sure that "Use Bluetooth Device for PTT" is selected. If it isn't, tap it to select it.
5. Tap on "Bluetooth Device to Use" and then select "BTH-400-PTT" from the list.
6. The app will then prompt you to press the PTT button on the BTH-400-ZU to confirm that the setup was successful.



Setting up WAVE Communicator (optional, Android - Bluetooth Low Energy)

1. Make sure that your phone's Bluetooth radio is enabled, and that the speaker microphone is powered on and that the microphone and phone are connected (paired) to each other.
2. Press and hold the PTT button on the BTH-400-ZU speaker microphone.
3. On your phone, go to Settings > Bluetooth. Select "Search for Devices" from the phone's Bluetooth menu. The phone will scan for nearby Bluetooth devices and a list showing the names of nearby Bluetooth devices will be shown on the screen.
4. Choose "PTT-Z" from the list.
5. Keep the phone and speaker mic near each other and wait a few seconds. The devices will pair to each other.
6. Open WAVE Communicator and log in using your username and password.
7. Tap on the More Options symbol "⋮" in the top right hand corner of the app and then tap "App Settings."
8. Make sure that "Use Bluetooth Device for PTT" is selected. If it isn't, tap it to select it.
9. Tap on "Bluetooth Device to Use" and then select "PTT-Z" from the list.
10. Release the PTT button on the BTH-400-ZU.

Setting up WAVE Communicator (iOS)

1. Make sure that your phone's Bluetooth radio is enabled, and that the speaker microphone is powered on and that the microphone and phone are connected (paired) to each other.
2. Open WAVE Communicator and log in using your username and password.
3. Tap on the More Options symbol "⋮" in the top right hand corner of the app and then tap "App Settings."
4. Press and hold the PTT button on the BTH-400-ZU speaker microphone.
5. Make sure that "Use Bluetooth Device for PTT" is selected. If it isn't, tap it to select it.
6. Tap on "Bluetooth Device to Use" and then select "PTT-Z" from the list.
7. Release the PTT button on the BTH-400-ZU.

B