

SUPPORT AND WARRANTY

PRYME Radio Products warrants this product against defects in materials or workmanship for a period of one year from the date of retail purchase. PRYME will repair or replace a defective unit, at our option, without charge for parts or labor. The limited warranty is extended only to the original purchaser and is valid only to consumers in the United States and Canada. It does not cover damage or failure caused by or attributable to Acts of God, abuse, misuse, improper or abnormal usage, faulty installation, improper maintenance, lightning, or other incidences of excessive voltage, or any tampering or repairs by other than a PRYME authorized repair facility. It does not cover replacement of consumable parts, transportation costs, or damage in transit.

Repair or replacement under the terms of this warranty does not extend the terms of this warranty. This warranty can only be modified by an officer of PRYME Radio Products, and then only in writing. Should this product prove defective in workmanship or material, the consumer's sole remedies shall be such repair or replacement as provided by the terms of this warranty. Under no circumstances shall PRYME Radio Products be liable for any loss or damage, direct, consequential, or incidental, arising out of the use of or inability to use this product. Some states do not allow limitations on how long an implied warranty lasts or the exclusions or limitations of incidental or consequential damages, so the above limitations or exclusions may not apply to you. This warranty gives you specific legal rights. You may also have other rights, which may vary, from state to state.

For support or warranty service on your PRYME product, contact us at 1-800-666-2654 or visit us on the web at www.PRYME.com.

COPYRIGHT AND TRADEMARK INFO

© 2018 PRYME Radio Products, Brea CA. All rights reserved. PRYME® is a trademark owned by PRYME Radio Products. All other product or service names are the property of their respective owners.

911 Mariner St., Brea, CA 92821
PH: 714.257.0300 FAX: 714.257.0600
TOLL FREE: 800.666.2654
WWW.PRYME.COM

version 1.00 May 2012

PRYME®

PRYME®

Trooper® SPM-2100 Heavy Duty Remote Speaker Microphone USER'S GUIDE FOR REPLACEABLE CABLE



PRYME® is a trademark owned by PRYME Radio Products, Brea, CA. All other product or service names are the property of their respective owners.

© 2018 PRYME Radio Products, Brea CA. All Rights Reserved

Removing and Replacing the Cable for the SPM-2100

TOOLS: To replace the microphone cable, you will need a small flat head screwdriver.

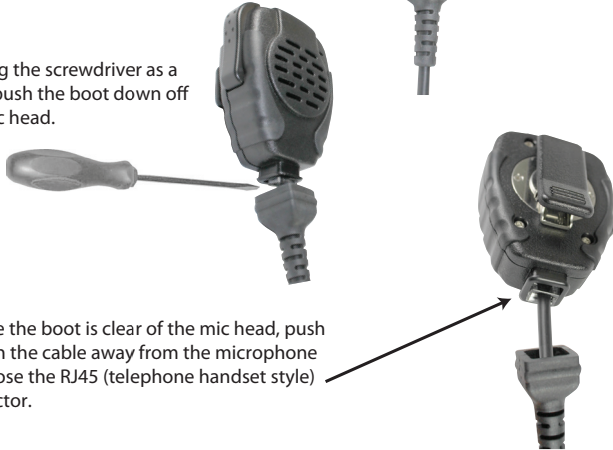
STEP ONE: REMOVE THE EXISTING CABLE (IF NEEDED)

In order to install a new microphone cable, you will first need to remove any microphone cable that is currently installed on your SPM-2100 series TROOPER microphone. If no mic cable is installed, skip to **STEP TWO** on next page.

1. Remove the protective rubber boot that covers the RJ45 connector on the bottom of the TROOPER microphone head. To do this, insert a small flathead screw driver under the rubber boot, between the boot and the microphone head.



2. Using the screwdriver as a lever, push the boot down off the mic head.



3. Once the boot is clear of the mic head, push it down the cable away from the microphone to expose the RJ45 (telephone handset style) connector.

4. Insert the small flathead screwdriver under the locking tab of the RJ45 connector and push the tab up.



5. Once the tab had been pushed up, the cable should be "unlocked" from the microphone. Pull the cable out of the microphone head. The cable and microphone head should now be separate from each other.



STEP TWO: ATTACHING THE NEW CABLE

1. Insert the RJ45 connector on the new microphone cable into the jack on the SPM-2100 TROOPER microphone head. The tab of the RJ45 connector should be on the back side of the microphone head.



2. Push the RJ45 connector into the jack until the tab "clicks" and locks into place.

3. Slide the protective rubber boot up the microphone cable and over the RJ45 jack on the SPM-2100 TROOPER microphone head until it completely covers the jack. This boot keeps dust, dirt, and moisture out of the RJ45 jack and the microphone should not be operated unless it is in place.

