

PRYMEBLU® BT-PTT2 PUSH-TO-TALK USER'S GUIDE

For use with PRYMEBLU wireless BT Adapters (Sold Separately)

The PRYMEBLU BT-PTT2 allows you to Push-to-Talk wirelessly over your two-way radio when using with a PRYMEBLU Adapter and a compatible wireless headset.

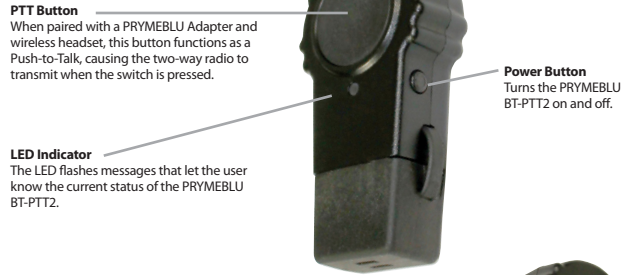


This manual applies to the PRYMEBLU BT-PTT2 Wireless Push-to-Talk transmitter. The PRYMEBLU BT-PTT2 works with all PRYMEBLU BT-500 series Wireless Adapters.

PRYMEBLU BT-PTT2
Model No.: BT-PTT2
Made in Taiwan
FCC ID N2E-BT-PTT2

PRYME® and PRYMEBLU® are trademarks owned by PRYME Radio Products, Brea CA. All other product or service names are the property of their respective owners.
© 2021 PRYME Radio Products, Brea CA. All Rights Reserved

Controls and Connection



PTT Button
When paired with a PRYMEBLU Adapter and wireless headset, this button functions as a Push-to-Talk, causing the two-way radio to transmit when the switch is pressed.

LED Indicator
The LED flashes messages that let the user know the current status of the PRYMEBLU BT-PTT2.

Power Button
Turns the PRYMEBLU BT-PTT2 on and off.



Dust Cover
Used to cover the USB port when the BT-PTT2 is not being recharged.

USB Charge Port
This port is used to connect the PRYMEBLU BT-PTT2 to any powered USB connector for recharging.



Clothing Clip
This 360° rotating clip can be used to secure the BT-PTT2 to the user's clothing or any other convenient location.

2

Federal Communication Commission Interference Statement

This equipment has been tested and found to comply with the limits for a Class B digital device, pursuant to Part 15 of the FCC Rules. These limits are designed to provide reasonable protection against harmful interference in a residential installation. This equipment generates, uses and can radiate radio frequency energy and, if not installed and used in accordance with the instructions, may cause harmful interference to radio communications. However, there is no guarantee that interference will not occur in a particular installation. If this equipment does cause harmful interference to radio or television reception, which can be determined by turning the equipment off and on, the user is encouraged to try to correct the interference by one of the following measures:

- Reorient or relocate the receiving antenna.
- Increase the separation between the equipment and the receiver.
- Connect the equipment into an outlet on a circuit different from that to which the receiver is connected.
- Consult the dealer or an experienced radio/TV technician for help.

FCC Caution: Any changes or modifications not expressly approved by the party responsible for compliance could void the user's authority to operate this equipment.

This device complies with Part 15 of the FCC Rules. Operation is subject to the following two conditions: (1) This device may not cause harmful interference, and (2) this device must accept any interference received, including interference that may cause undesired operation.

This equipment complies with FCC RF radiation exposure limits set forth for an uncontrolled environment. To maintain compliance with FCC RF exposure compliance requirements, please avoid direct contact to the transmitting antenna during transmission.

RF Exposure Warning!

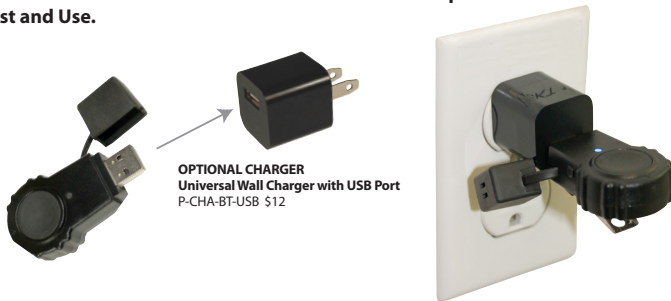
Please keep product 20cm away from your body or bystander during the radio operation. The typical handheld two-way radios were certified under mobile usage condition (i.e. keep 20cm away from the user body) and use of such radio closer than 20cm may exceed the US RF exposure limit and shall be avoided.

911 Mariner St., Brea, CA 92821
PH: 714.257.0300 FAX: 714.257.0600
TOLL FREE: 800.666.2654
WWW.PRYME.COM

version 3.0 February 2021

QUICK START

1. Charge the PRYMEBLU BT-PTT2
2. Pair the PRYMEBLU Adapter with a wireless headset
3. Pair the PRYMEBLU BT-PTT2 with the PRYMEBLU Adapter
4. Test and Use.



OPTIONAL CHARGER
Universal Wall Charger with USB Port
P-CHA-BT-USB \$12

STEP ONE: Charging the PRYMEBLU BT-PTT2

The PRYMEBLU BT-PTT2 has an internal Lithium Ion rechargeable battery pack which must be charged prior to operation, and must be recharged regularly. A fully charged battery should provide more than 12 hours of operation before needing to be recharged.

To charge the PRYMEBLU BT-PTT2:

- * Ensure the PRYMEBLU BT-PTT2 is turned off, using the button located on the side of the device.
- * Plug the USB charge port on the bottom of the BT-PTT2 into any powered USB connector. You will first need to remove the protective rubber dust cover. (To prevent dust and moisture from damaging your BT-PTT2, always ensure this cover is in place when you are not charging the device.)
- * When charging, the LED on the BT-PTT2 will show a solid blue light. When the device is done charging, the LED light will turn off.
- * The PRYMEBLU BT-PTT2 takes approximately 4.5 hours to charge. Actual charge time will vary depending on several factors including the battery's charge state, condition, and age.

Charging Cautions:

- Use only a POWERED USB port for charging. Non-powered ports (such as on a USB hub) will NOT work.
- Do not use a wall charger that appears to be damaged. (Example: frayed wires, melted plastic, etc.)
- Do not tamper with or modify the PRYMEBLU BT-PTT2 or charger.
- Always turn the power switch to the Off position when charging the PRYMEBLU BT-PTT2.

Pairing With an Audio Accessory

STEP TWO: Pairing PRYMEBLU Adapter, Wireless Headset, and BT-PTT2

In order to operate, the PRYMEBLU BT-PTT2 must be paired to PRYMEBLU Adapter (BT-500 series). However, The PRYMEBLU Adapter must first be paired to a wireless headset. To pair these devices, follow this procedure:

Pairing the PRYMEBLU Adapter and wireless Headset

- * The PRYMEBLU Adapter must be connected to a compatible radio with a charged battery. Ensure the two-way radio, wireless headset, and PRYMEBLU BT-PTT2 are all powered off.
- * Place the PRYMEBLU Adapter in Accessory Pairing mode. On most adapters, this is done by turning the two-way radio on while holding down the Talk button on the PRYMEBLU Adapter. Continue to hold the Talk button down for approximately three seconds. Release the Talk button when the status LED flashes two times per second. The PRYMEBLU Adapter is now in audio accessory pairing mode.
- * Activate the pairing mode on your wireless headset by following the instructions provided by the headset's manufacturer. Once the wireless audio accessory and PRYMEBLU Adapter are paired with each other, the status LED on the PRYMEBLU Adapter will show a constant blue light for three seconds.
- * Once the headset and PRYMEBLU Adapter have been successfully paired, turn off the two-way radio and wireless headset and wait at least three seconds.

Pairing the PRYMEBLU Adapter and PRYMEBLU BT-PTT2

- * Turn on the two-way radio while holding down the Talk button on the PRYMEBLU Adapter. Continue to hold the Talk button down for approximately three seconds. Release the Talk button when the status LED flashes two times per second.
- * Press and release the Talk button again. The LED should not flash three times per second, indicating that the PRYMEBLU Adapter is now in PTT pairing mode.
- * Place the PRYMEBLU BT-PTT2 in pairing mode by holding down the Push-To-Talk button while turning the power on using the Power Button on the side of the device. Continue to hold down the Push-To-Talk button until the LED indicator on the PRYMEBLU BT-PTT2 shows two blue flashes every second. You can then release the Push-to-Talk button. The PRYMEBLU BT-PTT2 is now in pairing mode.
- * Once the PRYMEBLU Adapter and PRYMEBLU BT-PTT2 are paired with each other, the status LED on the PRYMEBLU Adapter will show a constant blue light for three seconds and the LED on the PTT will show one blue flash every six seconds.
- * If the PRYMEBLU Adapter or PRYMEBLU BT-PTT2 does not detect a compatible wireless accessory within 60 seconds of being put into pairing mode, the devices will exit the pairing mode and resume normal operation.
- * After pairing is successful, turn off the PRYMEBLU BT-PTT2 and the two-way radio that the PRYMEBLU Adapter is attached. Wait at least three seconds.

Testing and Using the PRYMEBLU BT-PTT2

STEP THREE: Testing and Using the PRYMEBLU BT-PTT2

After the wireless headset, PRYMEBLU Adapter and PRYMEBLU BT-PTT2 have been paired with each other you can test and use them together:

- * Turn on the two-way radio the PRYMEBLU Adapter is connected to.
- * Turn on the wireless headset. Within a few seconds the LED indicator on the PRYMEBLU Adapter should show a long flash, indicating the wireless headset and PRYMEBLU Adapter are connected.
- * Turn on the PRYMEBLU BT-PTT2. The LED indicator on the PRYMEBLU BT-PTT2 will flash rapidly. Within a few seconds the LED indicator will show one blue flash per second, indicating that it is connected wirelessly to the PRYMEBLU Adapter.

*You will now be able to operate using the wireless accessories. Pressing the Push-to-Talk button on the PRYMEBLU BT-PTT2 will cause the two-way radio to transmit. Transmit audio will be picked up by the wireless headset. Received signals will also be heard through the wireless headset's earphone.

Step 1: Charge

Step 2: Pair Devices



Step 3: Test and Use

5

Troubleshooting

My PRYMEBLU BT-PTT2 will not pair with the PRYMEBLU Adapter.

Follow the instructions to place the PRYMEBLU Adapter into the correct pairing mode and then activate the pairing mode on the PRYMEBLU BT-PTT2. Make sure that the PRYMEBLU Adapter and PTT are within one meter of each other. Make sure that all other nearby wireless devices are turned off. These devices can interfere with the pairing process.

My PRYMEBLU BT-PTT2 worked fine before, but is not working now.

Ensure that your PRYMEBLU BT-PTT2 has a fully charged battery and is turned on. Ensure that the wireless headset is powered on and paired with the PRYMEBLU Adapter. If the devices will still do not work, re-pair the PRYMEBLU Adapter, wireless Headset, and PRYMEBLU BT-PTT.

7

STATUS LED MESSAGES

The meanings of the various status LED messages shown by the PRYMEBLU BT-PTT2 are shown on the following table:

LED INDICATION	MEANING
No indication	Device is powered off
Two blue flashes every second	Pairing mode
One blue flash ever six seconds	BT connected
Continuous solid red	PTT button pressed
Repeated rapid blue flash	BT link lost
One blue flash every second	Battery low
Continuous solid blue (when connected to charger)	Device charging
No indication (when connected to charger)	Device finished charging

SPECIFICATIONS

SPECIFICATIONS	
Operating temperature:	-20 ° C to 50 ° C
Storage temperature:	-40 ° C to 80 ° C
Size:	65mm (H) x 30mm (W) x 17mm (D)
Weight:	25 grams
BT Version:	Fully Qualified BT v2.1
Chip set:	CSR BC5 + 16MB external Flash
Receiver Sensitivity:	-82 dBm (typical)
BT Power Class:	Class 2
Maximum Range:	10 meters
Display:	Two color LED
BT Profile Support:	SPP (Serial Port) Profile
DC Input:	5 VDC
Current Draw:	16 mA (average), 20 mA (maximum)
Battery:	240mAh Lithium-Ion
Charging Type:	USB

6

SUPPORT AND WARRANTY

PRYME Radio Products warrants this product against defects in materials or workmanship for a period of one year from the date of retail purchase. PRYME will repair or replace a defective unit, at our option, without charge for parts or labor. The limited warranty is extended only to the original purchaser and is valid only to consumers in the United States and Canada. It does not cover damage or failure caused by or attributable to Acts of God, abuse, misuse, improper or abnormal usage, faulty installation, improper maintenance, lightning, or other incidences of excessive voltage, or any tampering or repairs by other than a PRYME authorized repair facility. It does not cover replacement of consumable parts, transportation costs, or damage in transit.

Repair or replacement under the terms of this warranty does not extend the terms of this warranty. This warranty can only be modified by an officer of PRYME Radio Products, and then only in writing. Should this product prove defective in workmanship or material, the consumer's sole remedies shall be such repair or replacement as provided by the terms of this warranty. Under no circumstances shall PRYME Radio Products be liable for any loss or damage, direct, consequential, or incidental, arising out of the use of or inability to use this product. Some states do not allow limitations on how long an implied warranty lasts or the exclusions or limitations of incidental or consequential damages, so the above limitations or exclusions may not apply to you. This warranty gives you specific legal rights.

You may also have other rights, which may vary, from state to state.

For support or warranty service on your PRYME product, contact us at 1-800-666-2654 or visit us on the web at www.PRYME.com.

COPYRIGHT AND TRADEMARK INFO

© 2021 PRYME Radio Products, Brea CA. All rights reserved. PRYME® and PRYMEBLU™ are trademarks owned by PRYME Radio Products. All other product or service names are the property of their respective owners.

DISCLAIMER: The wireless link used by PRYMEBLU products is an open standard, unsecured technology. As such, it is not recommended for first-responder or other mission critical users.

8