

**Federal Communication Commission Interference Statement**

This equipment has been tested and found to comply with the limits for a Class B digital device, pursuant to Part 15 of the FCC Rules. These limits are designed to provide reasonable protection against harmful interference in a residential installation. This equipment generates uses and can radiate radio frequency energy and, if not installed and used in accordance with the instructions, may cause harmful interference to radio communications. However, there is no guarantee that interference will not occur in a particular installation. If this equipment does cause harmful interference to radio or television reception, which can be determined by turning the equipment off and on, the user is encouraged to try to correct the interference by one of the following measures:

- Reorient or relocate the receiving antenna.
- Increase the separation between the equipment and receiver.
- Connect the equipment into an outlet on a circuit different from that to which the receiver is connected.
- Consult the dealer or an experienced radio/TV technician for help.

FCC Caution: Any changes or modifications not expressly approved by the party responsible for compliance could void the user's authority to operate this equipment.

This device complies with Part 15 of the FCC Rules. Operation is subject to the following two conditions: (1) This device may not cause harmful interference, and (2) this device must accept any interference received, including interference that may cause undesired operation.

This equipment complies with FCC RF radiation exposure limits set forth for an uncontrolled environment. To maintain compliance with FCC RF exposure compliance requirements, please avoid direct contact to the transmitting antenna during transmitting.

**RF Exposure Warning!**

This device contains transmitters and receivers which emit Radio Frequency (RF) energy. The device is designed to comply with the limits for exposure to RF energy set by the Federal Communications Commission (FCC) of the United States, Industry Canada (IC) of Canada, and the regulating entities of other countries.

If you are still concerned about exposure to RF energy, you can further limit your exposure by limiting the amount of time you use the equipment or by placing more distance between your body and the device, since exposure level drops off dramatically with distance.

Version 1.01.DUAL JULY 2021

**PRYME®**

911 Mariner St., Brea, CA 92821  
 PH: 714.257.0300 FAX: 714.257.0600  
 TOLL FREE: 800.666.2654  
 WWW.PRYME.COM

**PRYME®**

**WIRELESS DUAL ADAPTER USER'S GUIDE**  
**For use with both a two-way radio and a smartphone**

The PRYME Dual Adapter allows you to use the same Apple® compatible wired headset or earpiece for both your two-way radio and smartphone using a Push-to-Talk over Cellular (PoC) software app.

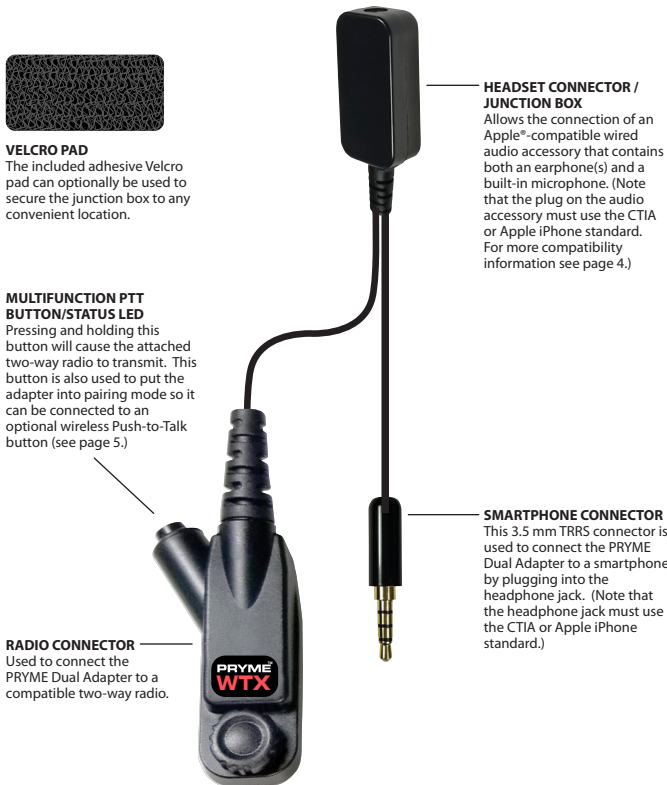
This manual applies to  
**PRYME WTX-523-DUAL**  
**and WTX-583-DUAL**



© 2021 PRYME Radio Products, Brea, CA. All Rights Reserved.

Made in Taiwan

**Controls and Connection**



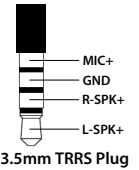
**NOTE:** WTX-583-DUAL Model shown. Other models may vary slightly in appearance.

**QUICK START**

- Step One: Plug a compatible wired accessory into the adapter.
- Step Two: Connect the adapter to your radio.
- Step Three: Connect the adapter to your smartphone.
- Step Four: Pair the wireless PTT to the adapter (optional).
- Step Five: Use the PRYME Dual Adapter.

**STEP ONE: Plug a compatible wired accessory into the adapter.**

PRYME Dual Adapter requires an Apple®-compatible wired audio accessory that contains both an earphone(s) and a built-in microphone. The plug on the audio accessory must be a 3.5 mm TRRS type using the CTIA or Apple iPhone wiring standard. This includes accessories such as the PRYME PICO-99A (sold separately, for more information, see page 7) or Apple earbuds such as part number ME186LL/A, or MD827LL/A.



- Firmly plug the 3.5 plug of the audio accessory into the headset connector/junction box until it seats.



**STEP TWO: Connect the adapter to your radio.**

To connect your PRYME Dual Adapter to a two-way radio, follow these steps:

- Always turn off your two-way radio before connecting or disconnecting the PRYME Dual Adapter.
- Plug the PRYME Dual Adapter's radio connector into the audio accessory jack of your two-way radio.
- On some models of two-way radio, you may need to tighten a retaining screw to ensure that the Connector remains attached to the radio



**STEP THREE: Connect the adapter to your smartphone.**

To connect the PRYME Dual Adapter to your smartphone or tablet:

- Insert the smartphone connector plug of the PRYME Dual Adapter into the headphone jack of your smart device and press down until the plug snaps firmly into place.



**STEP FOUR: Pair the wireless PTT to the adapter.**

The PRYME Dual Adapter is sold with one of several different, wireless Push-to-Talk buttons. These buttons allow you to wirelessly activate PTT for your two-way radio.

Before the wireless PTT button will function with a PRYME Dual Adapter, the two devices must be paired with one another. Once they have been paired, the two devices will remember each other and should not need to be re-paired again. To pair the PRYME Dual Adapter and a compatible wireless PTT do the following:

- Turn off the radio that the PRYME DUAL Adapter is connected to. Wait at least three seconds.
- Make sure that a compatible accessory is plugged into the Dual Adapter's headset connector.
- Turn the radio on while holding down the Multifunction/PTT button on the PRYME DUAL Adapter. Continue to hold the button down.
- While continuing to hold down the Multifunction Button on the Dual Adapter, press and then release the Push-to-Talk button on the finger PTT. Press and release this button approximately once per second for 3-5 seconds.

**NOTE:** If you receive an "invalid accessory error, please tune the radio to a digital channel rather than an analog one and repeat the previous step.

- Release the Multifunction button on the Dual adapter. Continue to press and then release the Push-to-Talk button on the wireless finger PTT once a second for another 3-5 seconds.
- Pressing the Push-to-Talk button on the wireless finger PTT should now cause the two-way radio to transmit. If it does not, try repeating the pairing process.

The following PRYME wireless PTT buttons are compatible with the PRYME Dual Adapter:



**BT-PTT-FOB**

**BT-PTT-RING**

**BT-PTT-STRAP**

**PRYME PICO-99A**

Optional audio accessory for use with the PRYME Dual Adapter



PICO-99A with SNP-AT earphone shown.

PRYME's innovative PICO-99A surveillance kit (sold separately) is the perfect companion product for the PRYME Dual Adapter. The Pico has both a phone hook button for answering and hanging up phone calls, as well as a PTT button that is compatible with most Push-to-Talk over Cellular (PoC) apps including Zello, Wave Communicator, ES Chat, and Kodiak compatible apps such as Verizon PTT Plus and AT&T Enhanced Push-to-Talk. It features:

- Custom made Braided Fiber cable is soft, comfortable and resists tangling
- 2-pin SNAP connector lets you change earpieces easily yet is extremely secure and rugged
- This is an extremely rugged single-wire cable for lapel and Surveillance use.
- Newly-designed mic housing contains custom microprocessor, power switch, PTT button and phone hook button.
- Thick, Braided Fiber radio cable with metal clamp retention eliminates strain on the wires inside the cable
- 360 degree rotating clip on PTT/mic housing attaches to lapel, coat, uniform, as required by user

The PICO is available with different earpieces depending on your preference:



**STEP FIVE: Use the PRYME Dual Adapter**

Once the PRYME Dual Adapter has been set up, you can use it the following ways:

- Received two-way radio calls will be heard through the earphone(s) of the connected audio accessory. The volume is controlled by the volume knob on the two-way radio.
- Smart phone audio, including phone audio, media audio, and PTT over Cellular calls will be heard through the earphone(s) of the connected audio accessory. The volume is controlled by the volume buttons and sliders on the smart device.
- You can make two-radio calls by pressing and holding the PTT/Multifunction button on the PRYME Dual Adapter. Transmit audio will be taken from the microphone of the connected audio accessory. Note that if you have an (optional) compatible wireless BT PTT paired to the Dual Adapter, you can also initiate radio calls by pressing and holding this button instead. Pressing either of these PTT buttons will not have any effect on smartphone operation and will NOT initiate a PoC call.
- Phone microphone audio will also be taken from the microphone of the connected audio accessory. This includes for phone calls, voice commands, sending PoC calls, etc.
- If the connected audio accessory has phone control buttons (such as a Hook button for answering or hanging up phone calls, or Volume Control buttons) those buttons will be used to control the phone. Pressing these buttons will not have any effect on the operation of the two-way radio.
- If the connected audio accessory has a PTT button that is compatible with your PoC app, this button can be used to initiate calls using the PoC app installed on your smartphone. This button will not have any effect on the operation of the two-way radio.

**SUPPORT AND WARRANTY**

PRYME Radio Products warrants this product against defects in materials or workmanship for a period of one year from the date of retail purchase. PRYME will repair or replace a defective unit, at our option, without charge for parts or labor. The limited warranty is extended only to the original purchaser and is valid only to consumers in the United States and Canada. It does not cover damage or failure caused by or attributable to Acts of God, abuse, misuse, improper or abnormal usage, faulty installation, improper maintenance, lightning, or other incidences of excessive voltage, or any tampering or repairs by other than a PRYME authorized repair facility. It does not cover replacement of consumable parts, transportation costs, or damage in transit.

Repair or replacement under the terms of this warranty does not extend the terms of this warranty. This warranty can only be modified by an officer of PRYME Radio Products, and then only in writing. Should this product prove defective in workmanship or material, the consumer's sole remedies shall be such repair or replacement as provided by the terms of this warranty. Under no circumstances shall PRYME Radio Products be liable for any loss or damage, direct, consequential, or incidental, arising out of the use of or inability to use this product. Some states do not allow limitations on how long an implied warranty lasts or the exclusions or limitations of incidental or consequential damages, so the above limitations or exclusions may not apply to you. This warranty gives you specific legal rights. You may also have other rights, which may vary, from state to state.

For support or warranty service on your PRYME product, contact us at 1-800-666-2654 or visit us on the web at [www.PRYME.com](http://www.PRYME.com).

**COPYRIGHT AND TRADEMARK INFO**

© 2021 PRYME Radio Products, Brea, CA. All Rights Reserved.  
 PRYME®, PRYMEBLU™ and PRYME WTX™ are trademarks owned by PRYME Radio Products.

Android is a trademark of Google Inc.  
 Apple is a trademark of Apple Inc.  
 AT&T is a trademark of AT&T Intellectual Property and/or AT&T affiliated companies.  
 ESChat is a registered trademark of San Luis Aviation, Inc.  
 iOS is a trademark of Cisco Systems and is used by Apple Inc. under license.  
 Kodiak Networks is a trademark of Kodiak Networks Inc., a wholly owned subsidiary of Motorola Solutions, Inc.  
 Verizon Wireless is a trademark of Verizon Trademark Services, LLC.  
 WAVE and WAVE COMMUNICATOR are trademarks of Twisted Pair Solutions, a wholly owned subsidiary of Motorola Solutions, Inc.  
 ZELLO is a trademark of Zello, Inc..

All other product or service names are the property of their respective owners. All other product or service names are the property of their respective owners.

**DISCLAIMER:** The BT wireless link used by this product is an open standard, unsecured technology. As such, it is not recommended for first-responder or other mission critical users.