

HIGHWAY™ SPM-800 SERIES Medium Duty In-Helmet Microphone

PRYME®



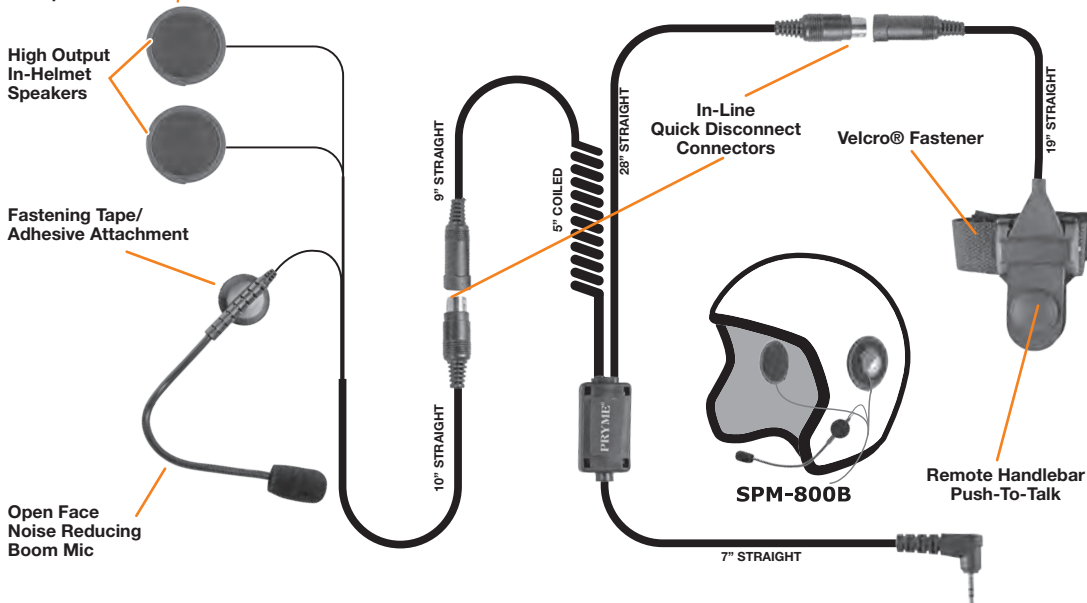
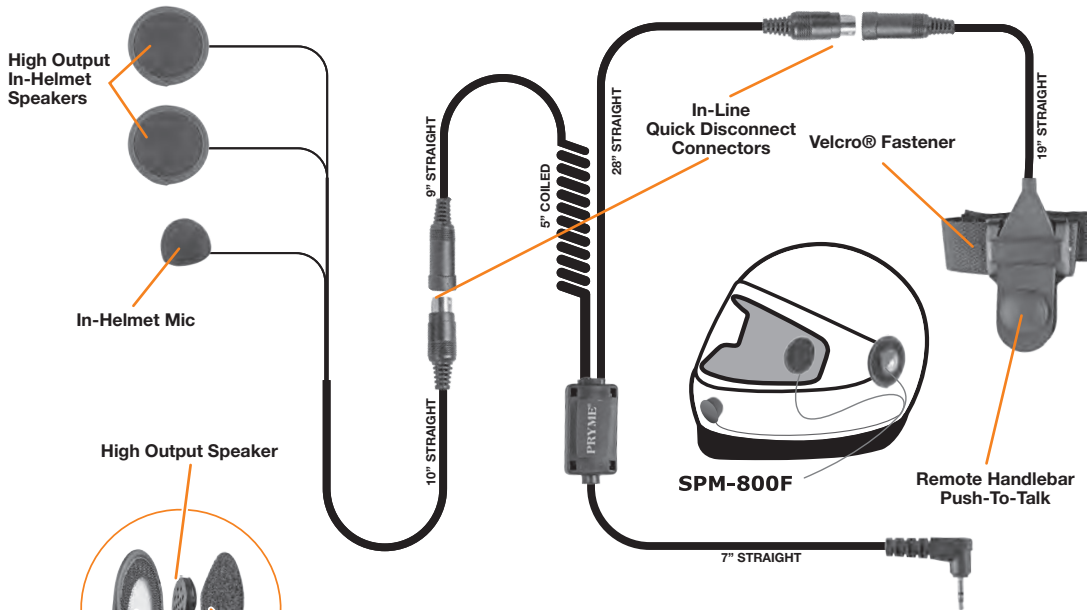
MSRP \$63

Depending on connector; see pages 76-82

SPM-800F

| Model | Connector |
|----------------------------------|-----------|
| FOR ICOM, MIDLAND & MAXON RADIOS | |
| SPM-800F | X00 |
| SPM-800FIL | X00IL |
| FOR KENWOOD & RELM RADIOS | |
| SPM-801F | X01 |
| FOR HYT/HYTERA & MOTOROLA RADIOS | |
| SPM-803F | X03 |
| SPM-813F | X13 |
| SPM-863F | X63 |
| FOR VERTEX & YAESU RADIOS | |
| SPM-800F | X00 |
| SPM-802F | X02 |
| SPM-842F | X42 |

See pages 76-82 for connector images.



SPM-800B

| Model | Connector |
|----------------------------------|-----------|
| FOR ICOM, MIDLAND & MAXON RADIOS | |
| SPM-800B | X00 |
| SPM-800BIL | X00IL |
| FOR KENWOOD & RELM RADIOS | |
| SPM-801B | X01 |
| FOR HYT/HYTERA & MOTOROLA RADIOS | |
| SPM-803B | X03 |
| SPM-813B | X13 |
| SPM-863B | X63 |
| FOR VERTEX & YAESU RADIOS | |
| SPM-800B | X00 |
| SPM-802B | X02 |
| SPM-842B | X42 |

See pages 76-82 for connector images.

FEATURES

- Medium duty, in-helmet motorcycle mic system
- Powerful in-helmet speakers allow the user to hear radio transmissions over road noise
- High-quality electret condenser element produces excellent transmit audio
- Handlebar mountable Push-To-Talk switch for convenient communications
- Installs into helmet using only two-sided fastening tape. No drilling of holes is required
- Modular features allow the mic system to be easily disconnected from the motorcycle
- Available for both open faced (SPM-800B) and full faced (SPM-800F) helmets

**For Bluetooth version,
use BTH-300-KIT 7
(pg. 10)**

HEADSETS