

HIGHWAY™ SPM-800 SERIES

Medium Duty In-Helmet Microphone

PRYME®

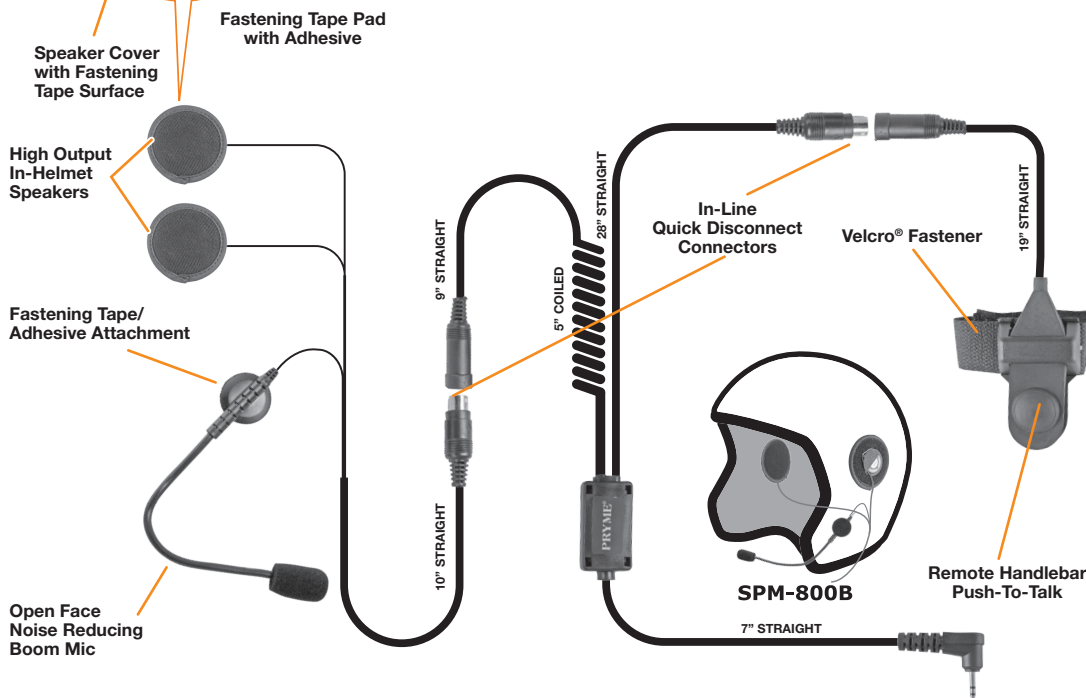
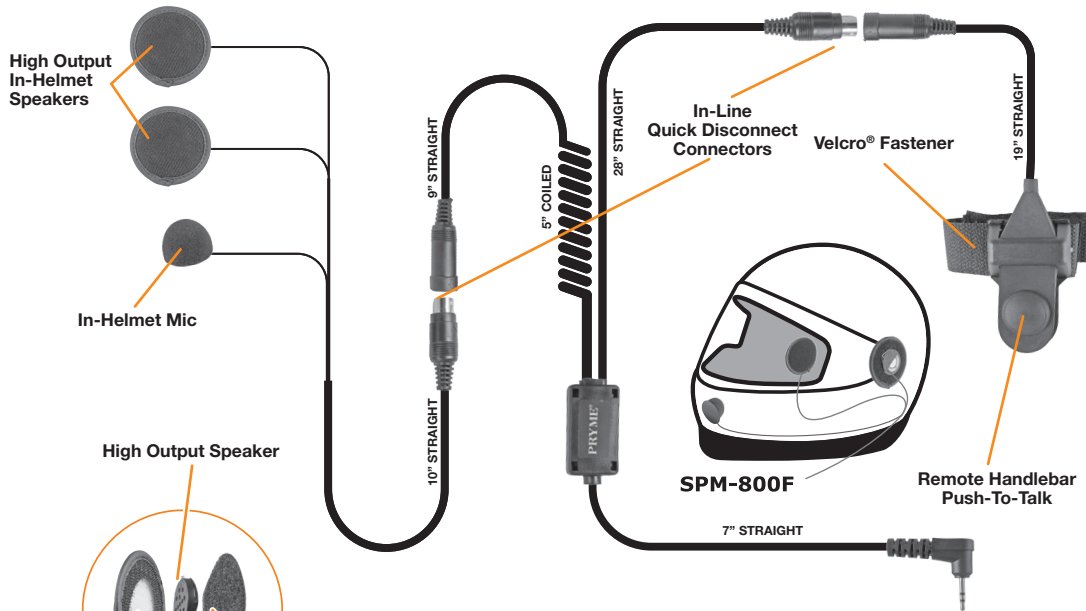
The SPM-800 HIGHWAY™ Series is an in-helmet boom microphone and speaker system for motorcycles. The electret mic system helps minimize background noise. The SPM-800 features a large, rubber-covered PTT button that can be secured to handlebars or held in the palm of the hand, and is easy to operate even while wearing gloves. The HIGHWAY™ installs easily, using only velcro pads - there is no need to drill holes in the helmet.



FEATURES

- Medium duty, in-helmet motorcycle mic system
- Powerful in-helmet speakers allow the user to hear radio transmissions over road noise
- High-quality electret condenser element produces excellent transmit audio
- Handlebar mountable Push-To-Talk switch for convenient communications
- Installs into helmet using only two-sided fastening tape. No drilling of holes is required
- Modular features allow the mic system to be easily disconnected from the motorcycle
- Available for both open faced (SPM-800B) and full faced (SPM-800F) helmets

For Wireless version, use BTH-300-KIT 7 (pg. 4)



SPM-800F

Model	Connector
FOR ICOM, MIDLAND & MAXON RADIOS	
SPM-800F	x00
SPM-830F	x30
SPM-830sF	x30s
FOR KENWOOD & RELM RADIOS	
SPM-801F	x01
FOR HYT/HYTERA & MOTOROLA RADIOS	
SPM-803F	x03
SPM-813F	x13
SPM-863F	x63
FOR VERTEX & YAESU RADIOS	
SPM-800F	x00
SPM-802F	x02
SPM-842F	x42

See pages 54-59 for connector images.

SPM-800B

Model	Connector
FOR ICOM, MIDLAND & MAXON RADIOS	
SPM-800B	x00
SPM-830B	x30
SPM-830sB	x30s
FOR KENWOOD & RELM RADIOS	
SPM-801B	x01
FOR HYT/HYTERA & MOTOROLA RADIOS	
SPM-803B	x03
SPM-813B	x13
SPM-863B	x63
FOR VERTEX & YAESU RADIOS	
SPM-800B	x00
SPM-802B	x02
SPM-842B	x42

See pages 54-59 for connector images.

HEADSETS