

PRYME® SPM-1700 Helmet Mounted Skull Microphone

Our lightweight in-helmet communications system mounts to the helmet liner without tools, using a unique strap fastener system. The ear speaker provides ambient sound, and allows the user to hear incoming radio communications without blocking their ability to hear what is going on around them. Voice transmissions are picked up by a noise-resistant microphone which senses sound vibrations through the user's skull.

FEATURES

- Easily and quickly installs into most hardhats or helmets with plastic liners
- Heavy-duty construction, featuring polyurethane cable, rubber, and high-impact polycarbonate
- Picks up the voice audio directly from vibrations in the user's skull, making it very resistant to background noise
- Large, ambient receive ear speaker leaves the user's ears uncovered so they can hear what is going on around them
- Uses PRYME's compact tactical touch Push-To-Talk (PTT) for easy activation. The PTT can be interchanged with several optional styles of PTT (optional PTTs sold separately.)



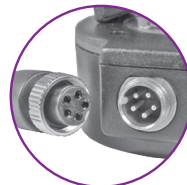
HIGH NOISE LOCATIONS



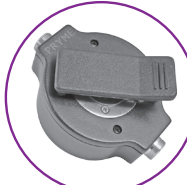
Noise Resistant Skull Microphone

Universal Strap Attaches to Most Types of Safety Helmets

Loud Ambient Speaker



Stainless Steel Threaded Connector



Metal Reinforced Swivel Clip

12" STRAIGHT

5" STRAIGHT

6.5" COILED

5" COILED

Heavy-Duty Coiled Cable

4" STRAIGHT

4" STRAIGHT

UPGRADE
QD™
QUICK DISCONNECT
AVAILABLE
See pages 52-53



PTT-1500D



- *Skull Mic portion rated IP67
- PTT-1500B rated IP56
- PTT-1500E Junction Box/PTT (optional) not rated
- PTT-1500D Waterproof PTT (optional) (shown above)